



Penketh South Community Primary
School

Meet the Teacher



2025 - 26



Y6

Teacher Miss Wright
Teaching Assistant Mrs Schofield



- Curriculum Overview
- Homework
- Communication with home
- Uniform
- Dates
- Retrieval / Assessments / Tests
- PE / Forest School
- Trips
- SATs
- Extra Curricular Activities
- PTA





Curriculum Overview Year 6 - see handout!



Homework

Planners

Please communicate via the planners in the first instance.

Sign your child's planner 3x per week.

Reading

Please listen to your child read at least 3 times a week. Our aim is to promote a love for reading and so we encourage you to make reading a fun part of your time together with your child, sharing all kinds of books and texts.

Spelling

Your child should practise the spellings from his/her year group list at least 3 times a week. Please sign the planner. Make use of the Emile app and Nessy website.

Times Tables

Please ask your child to learn and practise the times tables at least 3 times a week. Try asking your child questions in all kinds of different ways so that they develop a thorough understanding.



Homework after October Half - Term

Maths and SPAG

After the half - term the children are receiving arithmetic questions (see example) and SPAG questions (see example). Children should try to answer all the questions, spending about 30 min on arithmetic and 15 minutes on SPAG.

Please continue with Timestables, reading and spelling as usual.

Year 6
Arithmetic practice test 1

Name: _____
Date: _____

1	142 + 4521			1	10	136 x 2			1
2	2456 - 100			1	11	2924 ÷ 4			1
3	164 = 75 + ____			1	12	0.07– 0.04			1
4	79 - ____ = 34			1	13	$5\frac{3}{10} - 3\frac{2}{5}$			1
5	30 x 70			1	14	364 ÷ 14			2
6	$\frac{2}{12} + \frac{9}{12}$			1	15	357 ÷ 21			2
7	5.7 ÷ 100			1	16	$\frac{9}{10} - \frac{3}{5}$			1
8	1 ²			1	17	9.8 x 7.9			1
9	0.6 + 0.4			1	18	913,981-148,400			1

1. Circle the **adverb** that shows how Dave danced.

Dave put on his best shirt before dancing energetically.

.....

2. Circle the right words in each of the boxes to make sure that the sentences are written in **Standard English**.

Dave has lived in Brisbane

since/whilst

 he was a boy.

He could

of/have

 moved but decided to stay.

.....

3. Tick the correct box to say which clause is underlined in the following sentences:

Sentence	Main Clause	Subordinate Clause
If he listened really hard, Dave could hear music coming from next door.		

Communication with home



Planner



Facebook



Newsletter



Google Classroom



Uniform



Black trousers, shorts or skirt.



Red / White dress



White polo shirt or shirt.



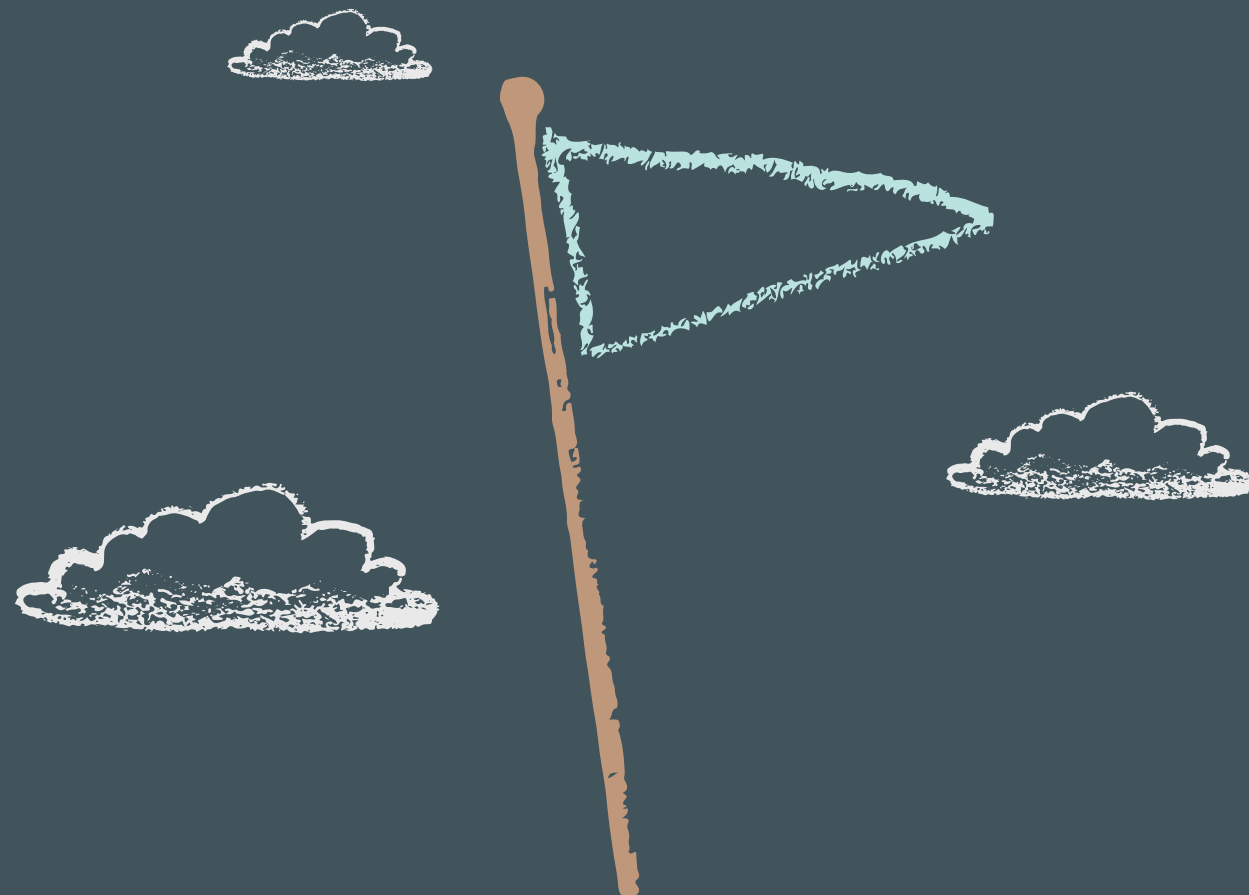
Red jumper or cardigan.



Black shoes (no trainers)



Lost property (see inside bike shed)



Red top



Black shorts / black tracksuit pants



Black jacket



Suitable footwear – inc trainers
(no boots)



Dates



1

- During September and October open days at various High Schools
- 31st October deadline for secondary school application
- Tuesday, 23rd and Wednesday 24th September
- January - SATs Information Meeting
- 12th - 15th May SATs - no holidays please
- May Residential Information Evening
- July - Transition Day with High Schools
- Tuesday 21st July - Year 6 Leavers' celebration
- June Residential –Ty'n-Y-Felin

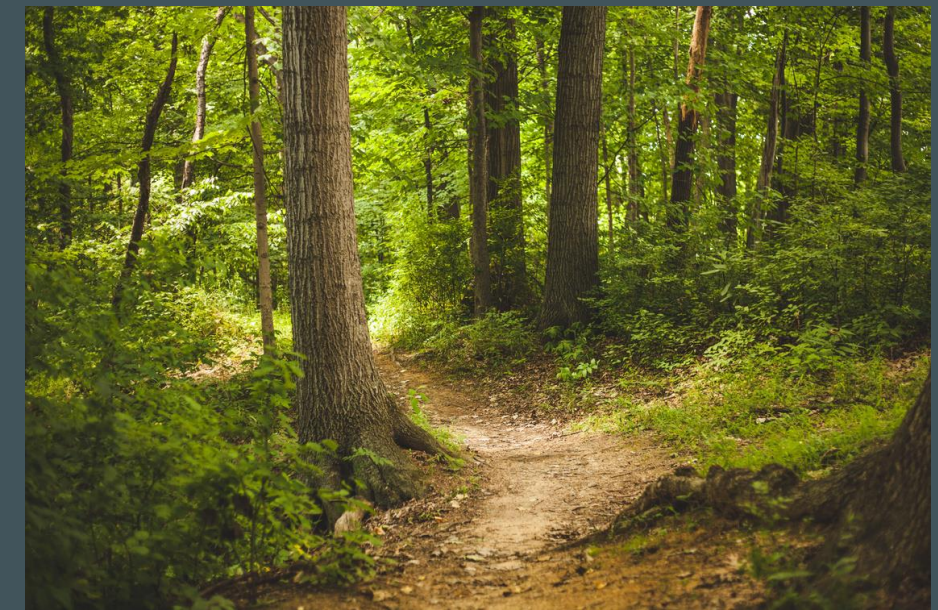
- Retrieval
- Assessment
- Tests



P.E. and Forest School



Our P.E. day is on Monday. Children to come to school in their P.E. kit please.



Our Forest School day is on Tuesday. Children to come into school in Forest School clothes and school shoes. Wellies and waterproofs in a bag, please.





Trips!

Tuesday 25th November - afternoon trip to
Crucial Crew

June Residential Trip - Ty'n-Y-Felin
Information Evening to be held in May





SATs!



We will be holding an information evening on Thursday 29th January providing you with further information about the SATs.

On this day, we will be selling revision booklets for half price.

After February half term, we are offering children booster sessions in the mornings before school. They will run on Tuesdays, Wednesdays and Thursdays, starting at 8.00am. Children will be using the CGP books, playing educational games and revising.



Extra-curricular Activities



Sports Clubs (leaflet)



Gymnastics (Later in the
year)



Performing Arts
KS2

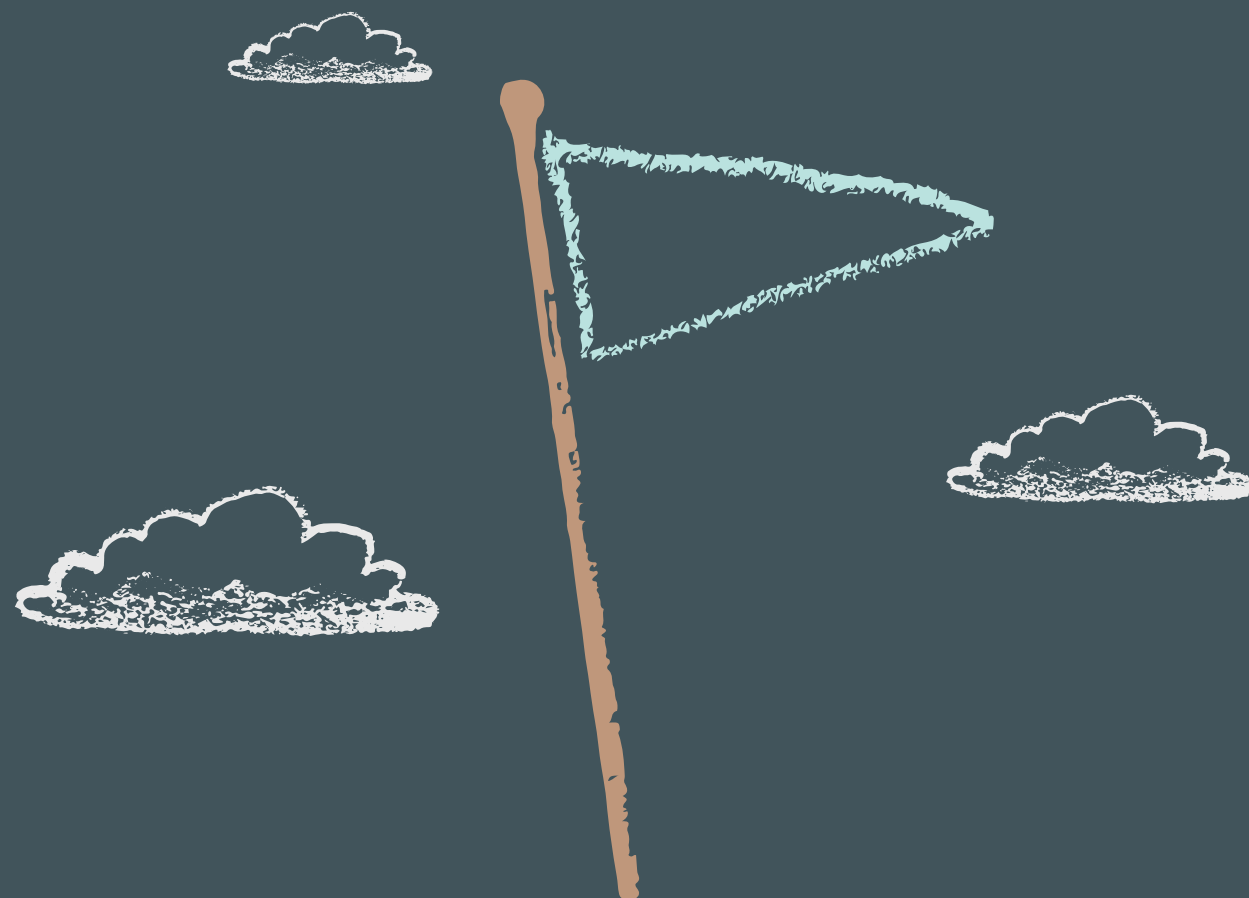


PTA



Next Meeting
TBC

How you can help!





Thank you!

Do you have any questions for me before we go?

