



Penketh South Community Primary
School

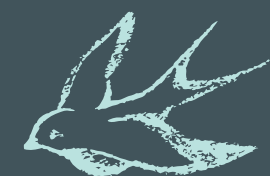
Meet the Teacher


2025 - 26

Y2

Teacher Mr Wood

Teaching Assistant Miss McQueen



- 
- Curriculum Overview
 - Homework
 - Communication with home
 - Uniform
 - Dates
 - Retrieval / Assessments / Tests
 - PE / Forest School
 - Trips
 - SATs
 - PTA
 - Others





Hello and
Welcome to
Year 2!





Curriculum Overview Year 2 -
see handout!



Homework



Reading

Planners
Please
communicate
via the planners
in the first
instance.



Please hear your child read at least 3 times a week and sign the planner. Our aim is to promote a love for reading and so we encourage you to make reading a fun part of your time together with your child, sharing all kinds of books and texts.



Spelling

Your child should practice the spellings from his/her year group list at least 3 times a week. Please sign the planner.



Maths

Please ask your child to learn and practice Maths and times tables using TTRockstars and Numbots at least 3 times a week. Please sign the planner.



Communication with home



School Website



Facebook



Twitter



Google Classroom



Uniform



Black trousers, shorts or skirt.



Red / White dress



White polo shirt or shirt.



Red jumper or cardigan.



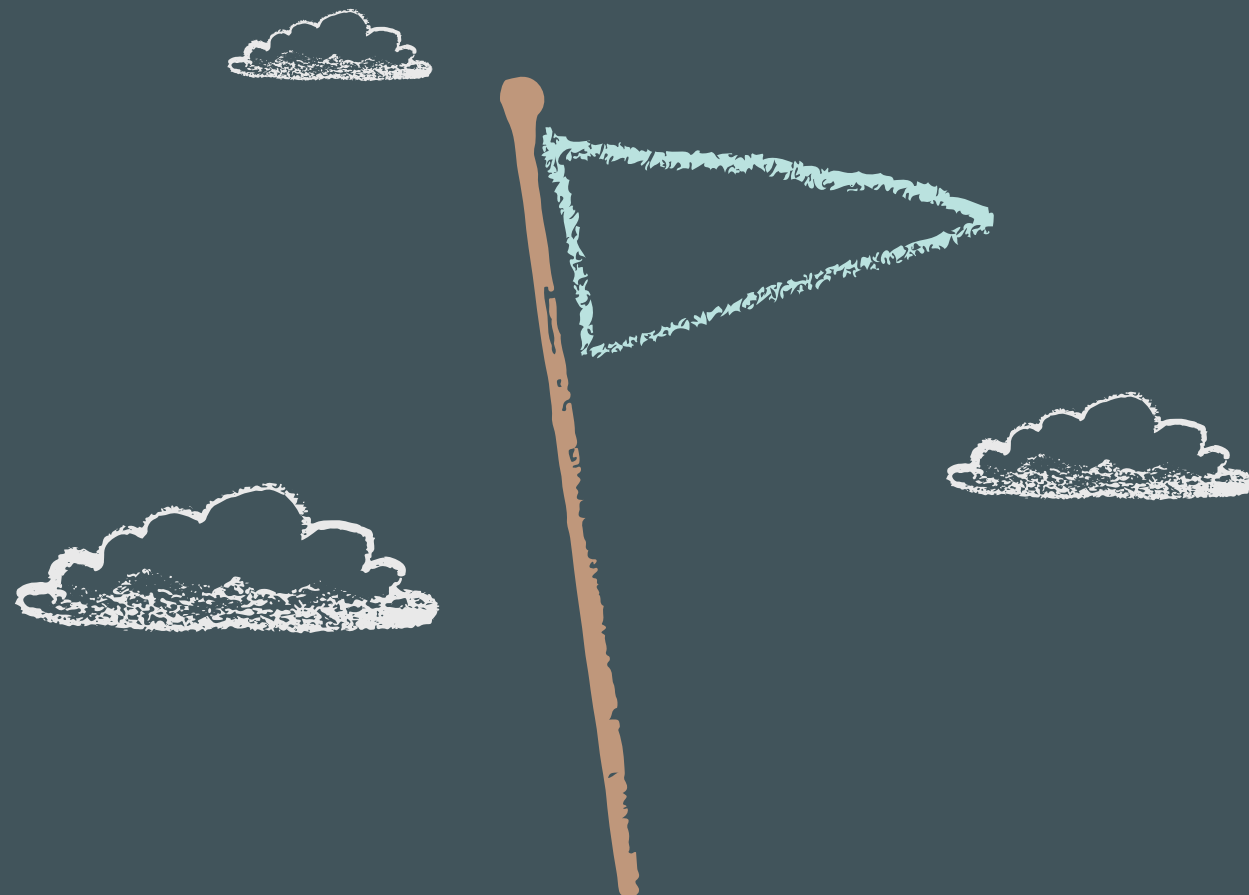
Black shoes



Lost property



*Stacey Courtney's Facebook page for
second-hand uniform*





Dates

11th September – SEND coffee morning (SALT)



23rd – 24th September – parents evening

25th September – Macmillan coffee morning

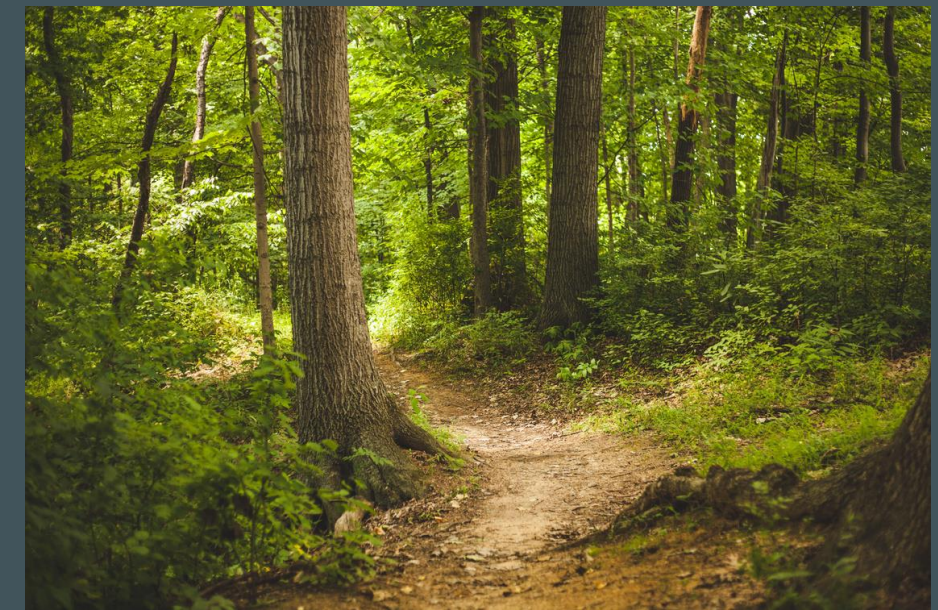
26th September – European languages day

29th September – individual photos

P.E. and Forest School



Our P.E. day is on **Tuesday**. Children to come to school in their P.E. kit please.



Our Forest School day is on Wednesday. Children to come into school in Forest School clothes and school shoes. Wellies and waterproofs in a bag, please.





Trips!

Vale Royal Falconry – School visit

Norton Priory



Martin Mere Wetlands Centre



SATS!



Year 2 SATs are national end of Key Stage 1 (KS1) assessments in English and Maths that take place in the summer term of Year 2. The tests assess a child's progress in reading, maths, and spelling, punctuation, and grammar (SPaG) to show what they have learned during KS1. The results provide an indicator of a child's attainment and areas where they may need more support, informing both teachers and parents about their progress and the school's overall performance.

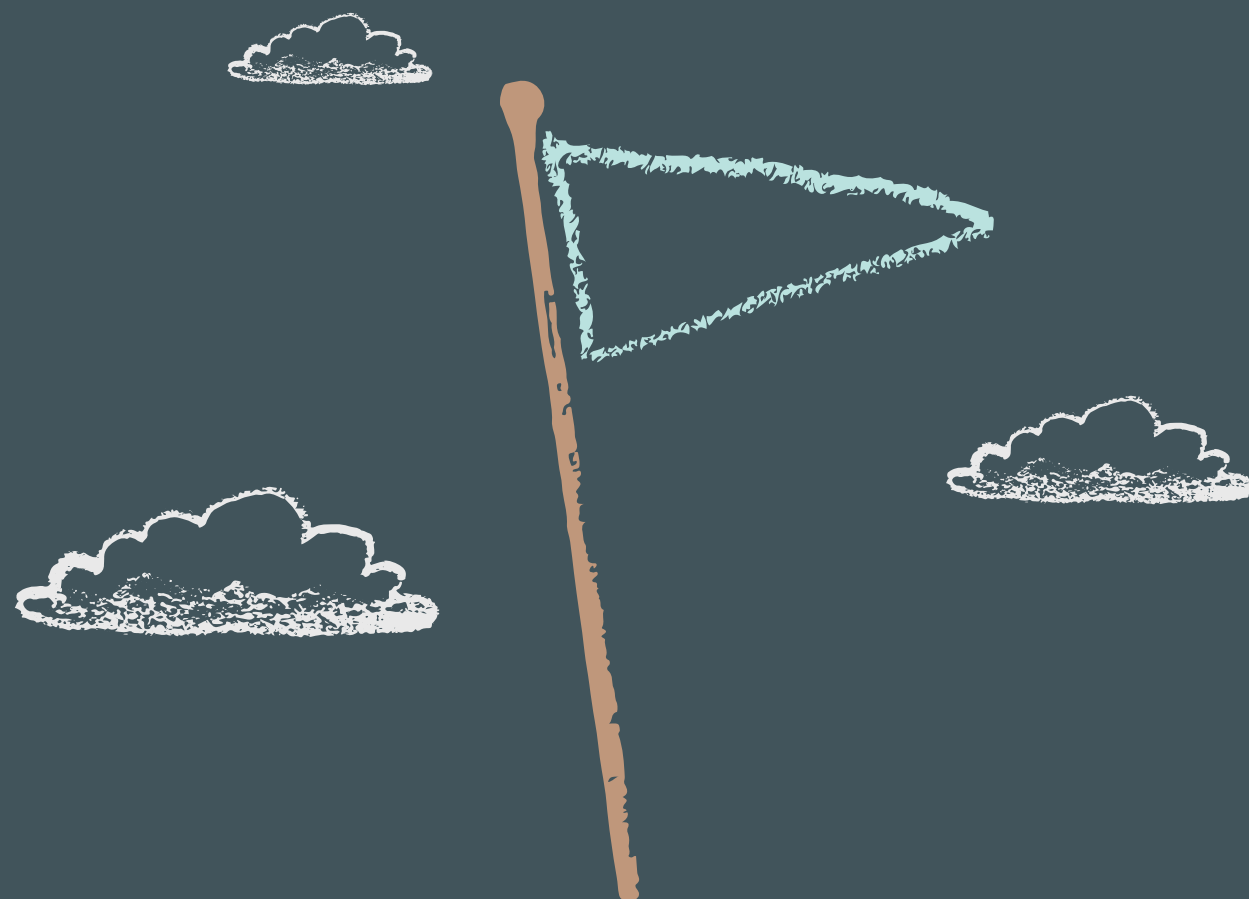


PTA

How you can
help!



Next Meeting
11th September 2025



Others





Thank you!

Do you have any questions for me before we go?

